



Test Report TR S2510PoE-DC
Firmware Version build 71585

Contents

1. Introduction	3
2. About This Test Report	4
3. Test Report	
A. RJIL-IP-QA-DS-SYS-010	5



1. Introduction

This document is known for problems and solutions for TECHROUTES TR S2510PoE-DC Series switch.

2. About This Test Report

This Test Report provides information for

A. To check support of SNMPv3 - RFC 3410-3416.

Present software version- Version 2.2.0C Build 71585;

Present hardware version- V1.0;

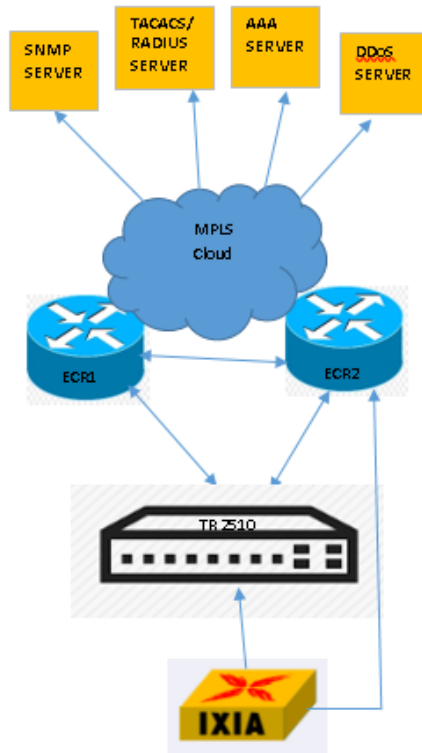


3. Test Report

A. RJIL-IP-QA-DS-SYS-010

1. Test Objective: To check support of SNMPv3 - RFC 3410-3416.

2. Test Set up : Switch , ECR1, ECR2, IXIA ,SNMP server



3. Switch Configuration :

SNMP V3

```
snmp-server group NNMI v3 noauth
```

```
snmp-server user initial NNMI v3
```

```
snmp-server host 1.1.1.2 version v3 auth initial authentication configure snmp
```

```
snmp-server hostv6 1::2 version v3 auth initial authentication configure snmp
```

```
snmp-server trap-add-hostname
```

```
snmp-server keep-alive 60
```




Wireshark capture

Apply a display filter: <Ctrl-F>

No.	Time	Source	Destination	Protocol	Length	port	Info
10	9.028124	1::2	1::1	ICMPv6	94		Echo (ping) request id=0x0001, seq=106, hop limit=128 (reply in 11)
11	9.038149	1::1	1::2	ICMPv6	94		Echo (ping) reply id=0x0001, seq=106, hop limit=64 (request in 10)
12	10.000121	Techrout_13:1f:f7	Spanning-tree (for-bridges)...	STP	60		RST. Root = 32768/0/5c:cc:ff:13:1f:f7 Cost = 0 Port = 0x0004
13	10.044146	1::2	1::1	ICMPv6	94		Echo (ping) request id=0x0001, seq=107, hop limit=128 (reply in 14)
14	10.049948	1::1	1::2	ICMPv6	94		Echo (ping) reply id=0x0001, seq=107, hop limit=64 (request in 13)
15	10.577984	1.1.1.2	239.255.255.250	SSDP	216	51007	M-SEARCH * HTTP/1.1
16	11.591479	1.1.1.2	239.255.255.250	SSDP	216	51007	M-SEARCH * HTTP/1.1
17	12.000070	Techrout_13:1f:f7	Spanning-tree (for-bridges)...	STP	60		RST. Root = 32768/0/5c:cc:ff:13:1f:f7 Cost = 0 Port = 0x0004
18	12.592462	1.1.1.2	239.255.255.250	SSDP	216	51007	M-SEARCH * HTTP/1.1
19	12.937429	1.1.1.2	1.1.1.1	ICMP	74		Echo (ping) request id=0x0001, seq=0/2304, ttl=128 (reply in 20)
20	12.939038	1.1.1.1	1.1.1.2	ICMP	74		Echo (ping) reply id=0x0001, seq=0/2304, ttl=255 (request in 19)
21	13.597284	1.1.1.2	239.255.255.250	SSDP	216	51007	M-SEARCH * HTTP/1.1
22	13.845553	1.1.1.2	1.1.1.1	ICMP	74		Echo (ping) request id=0x0001, seq=10/2560, ttl=128 (reply in 23)

Frame 13: 94 bytes on wire (752 bits), 94 bytes captured (752 bits) on interface \Device\NPF_{78A791C4-C2A8-4F9F-AE06-6313F97647F7}, id 0

Ethernet II, Src: HP_de:5b:39 (00:68:eb:de:5b:39), Dst: Techrout_13:1f:f7 (5c:cc:ff:13:1f:f7)

Internet Protocol Version 6, Src: 1::2, Dst: 1::1

Internet Control Message Protocol v6

- Type: Echo (ping) request (128)
- Code: 0
- Checksum: 0xd400 [correct]
- [Checksum Status: Good]
- Identifier: 0x0001
- Sequence: 107
- [Response In: 14]

Data (32 bytes)

Data: 6162636465666768696a6b6c6d6e6f707172737475767768... [Length: 32]

No.	Time	Source	Src Port	SrcMAC	Destination	Dst Port	DestMAC	Protocol
4	2.461931	1::1	20002	Techrout_13:1f:f7	1::2	162	00:68:eb:de:5b:39	SNMP
5	2.462117	1::2	20002	00:68:eb:de:5b:39	1::1	162	Techrout_13:1f:f7	ICMPv6
6	2.463409	1.1.1.1	20003	Techrout_13:1f:f7	1.1.1.2	162	00:68:eb:de:5b:39	SNMP
7	2.463571	1.1.1.2	20003	00:68:eb:de:5b:39	1.1.1.1	162	Techrout_13:1f:f7	ICMP
8	2.465384	1::1	20002	Techrout_13:1f:f7	1::2	162	00:68:eb:de:5b:39	SNMP
9	2.465571	1::2	20002	00:68:eb:de:5b:39	1::1	162	Techrout_13:1f:f7	ICMPv6
10	2.466618	1.1.1.1	20003	Techrout_13:1f:f7	1.1.1.2	162	00:68:eb:de:5b:39	SNMP
20	6.989409	1.1.1.1	20003	Techrout_13:1f:f7	1.1.1.2	162	00:68:eb:de:5b:39	SNMP
21	6.989576	1.1.1.2	20003	00:68:eb:de:5b:39	1.1.1.1	162	Techrout_13:1f:f7	ICMP
24	6.992945	1.1.1.1	20003	Techrout_13:1f:f7	1.1.1.2	162	00:68:eb:de:5b:39	SNMP
25	7.002747	1::1	20002	Techrout_13:1f:f7	1::2	162	00:68:eb:de:5b:39	SNMP
26	7.002750	1::1	20002	Techrout_13:1f:f7	1::2	162	00:68:eb:de:5b:39	SNMP
27	7.003035	1::2	20002	00:68:eb:de:5b:39	1::1	162	Techrout_13:1f:f7	ICMPv6
28	7.003103	1::2	20002	00:68:eb:de:5b:39	1::1	162	Techrout_13:1f:f7	ICMPv6

Frame 6: 356 bytes on wire (2848 bits), 356 bytes captured (2848 bits) on interface 0

Ethernet II, Src: Techrout_13:1f:f7 (5c:cc:ff:13:1f:f7), Dst: 00:68:eb:de:5b:39 (00:68:eb:de:5b:39)

Internet Protocol Version 4, Src: 1.1.1.1, Dst: 1.1.1.2

User Datagram Protocol, Src Port: 20003, Dst Port: 162

Simple Network Management Protocol

- msgVersion: snmpv3 (3)
- msgGlobalData
- msgAuthoritativeEngineID: 800093c7035ccff131ff7
- msgAuthoritativeEngineBoots: 1
- msgAuthoritativeEngineTime: 1937
- msgUserName: u1
- msgAuthenticationParameters: abb7a8499a37520326a1f0f1
- msgPrivacyParameters: <MISSING>
- msgData: plaintext (0)
 - plaintext
 - contextEngineID: 800093c7035ccff131ff7
 - contextName: